

# Strategy for reducing slips, trips and falls at the University of Manchester: Statistical annex

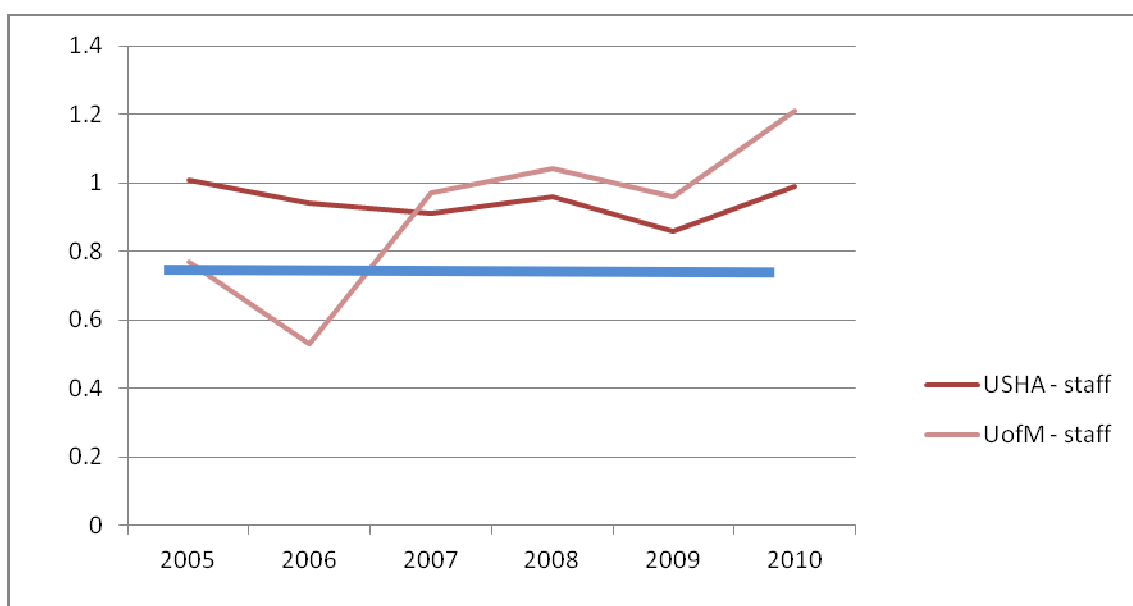
## Comparison within HE sector

- The following figures for RIDDOR accidents rates for slips, trips and falls are derived from the Universities Safety and Health Association (USHA) annual statistics, and the University of Manchester's own return to USHA.

Accident rate for RIDDOR reportable slips, trips and falls, per 1000 at risk				
Year	USHA - staff	UHSA - students	U of M - staff	U of M - students
2005	1.01	0.02	0.77	0.0
2006	0.94	0.03	0.53	0.06
2007	0.91	0.04	0.87	0.06
2008	0.96	0.05	1.04	0.08
2009	0.86	0.04	0.96	0.03
2010	0.99	0.04	1.21	0.08

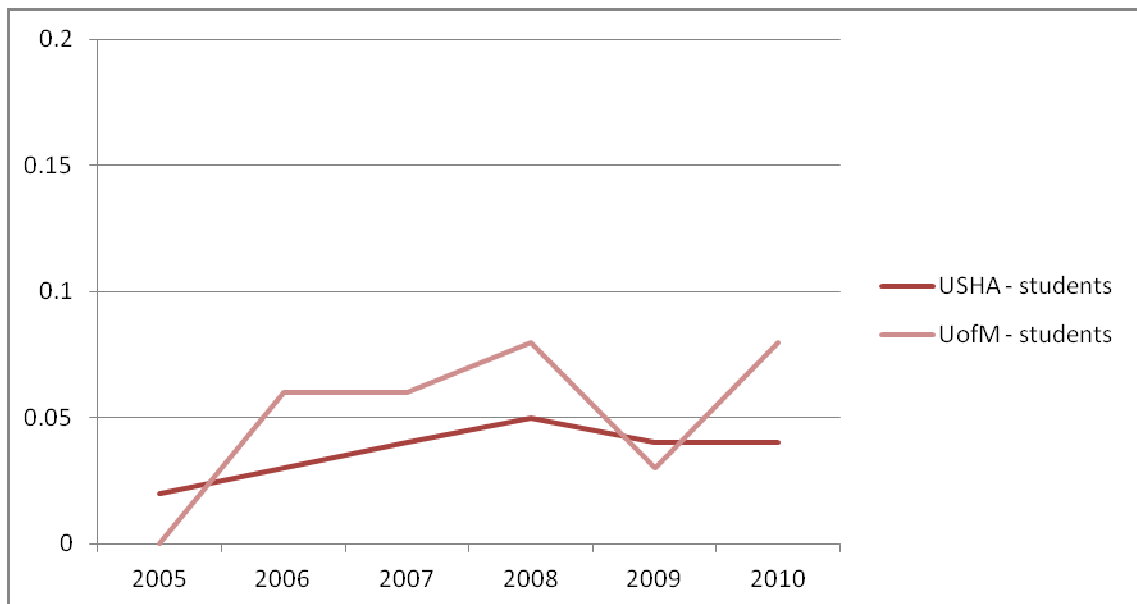
- UCEA have adopted a target rate of 0.77 such RIDDOR reportable accidents to staff, which is a 30% reduction on the 2001 figure<sup>1</sup>. As an employers association, they have not developed a target rate for students. Further analysis of accidents to students has not been carried out, as they contribute a relatively small proportion of reported accidents.

**Chart A : RIDDOR Slip, trip and fall accident rates per 1000 staff at risk**



<sup>1</sup> See UCEA annual report, at [http://www.ucea.ac.uk/index.cfm/pcms/site.Employee\\_Relations.Health\\_and\\_Safety.Health\\_and\\_Safety/](http://www.ucea.ac.uk/index.cfm/pcms/site.Employee_Relations.Health_and_Safety.Health_and_Safety/)  
Rev 6, 28 July 2011

**Chart B : Slip, trip and fall accident rates per 1000 students at risk**



## Accidents at the University of Manchester

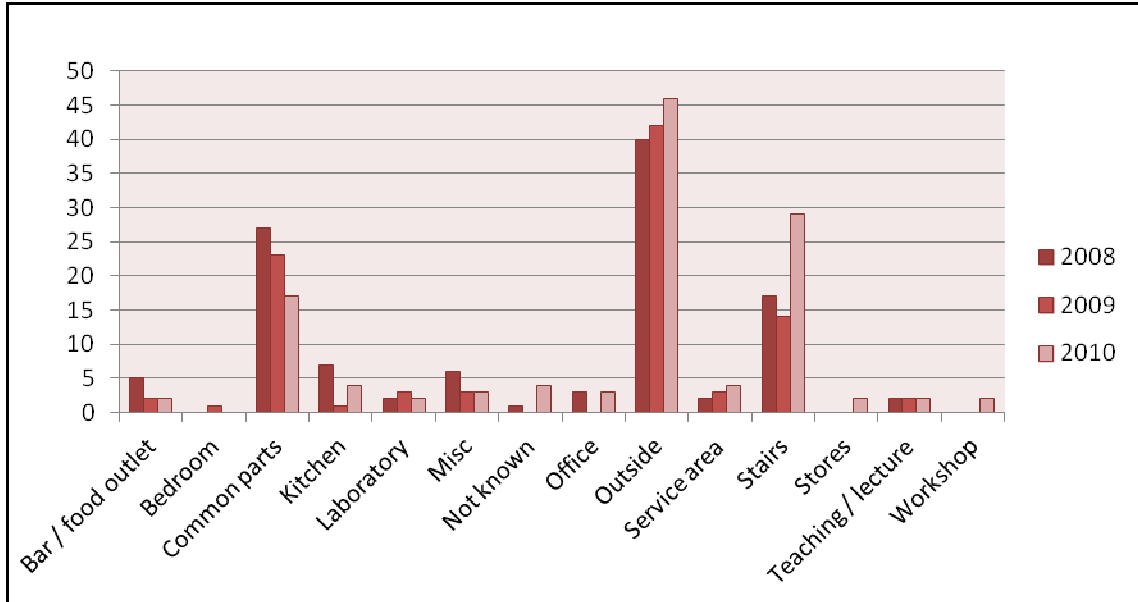
3. The following charts use data from all accidents reported to the Safety Office that occurred in the years 2008-2010. Not all slips and trips are reported, so there is an unknown and unavoidable error with using these data. Another unquantifiable error is likely to be differential reporting rates between groups of staff (eg lower reporting rates amongst students than Estates or STARS personnel).
4. During the period under consideration, HSE changed their classification of trips and slips on stairs and steps. Before April 2008, these were classed as slips, trips and falls on the same level; after April 2008, as falls from height. This makes comparisons over time difficult to make for this type of accident.
5. Reports that are clearly not work-related in any way have been excluded. These were a very small number of reports of slips and falls on the public highway, or as a result of fainting from a health condition.
6. Except for HE sector comparisons, the charts typically use actual numbers of accidents, rather than accident rates. This is mainly because the numbers are relatively low when groups of employees are considered (eg the rate of accidents to academics in EPS would be extremely small, and single events would distort comparisons).

## **Where they happen**

7. From Chart C, accidents outside, on common parts (including corridors, concourses and circulation routes), and on stairs/steps are the most commonly reported. Accidents elsewhere are relatively infrequent. The low number of reports for

kitchens, bars and food outlets is particularly notable, as HSE national statistics suggests these are high risk working environments.

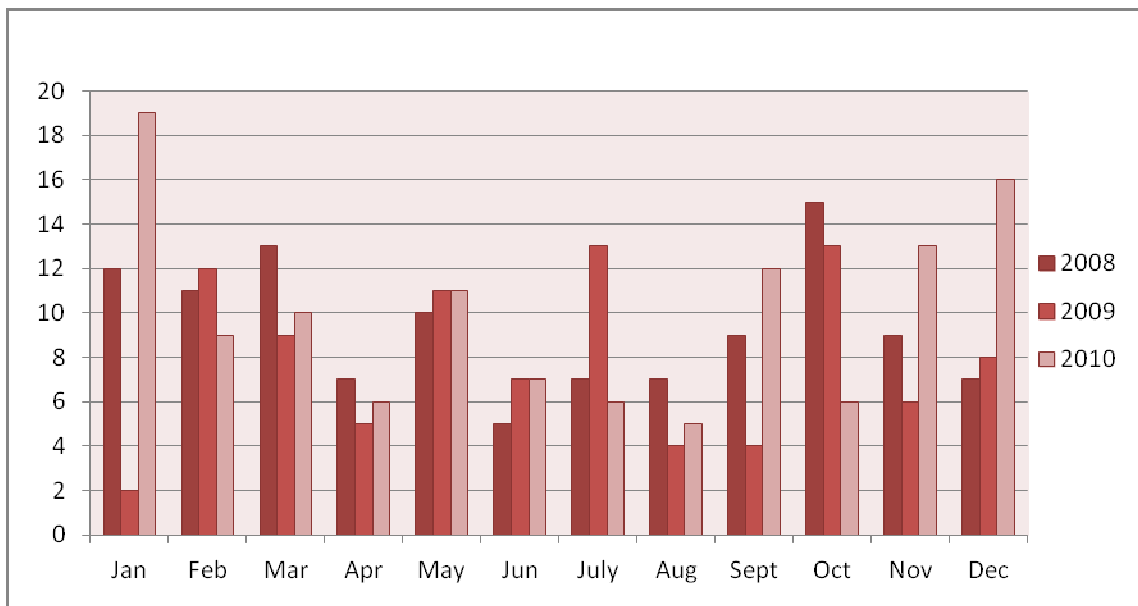
**Chart C : All reported slips, trips and falls, 2008-2010**



**When they happen :**

- The weather-related peaks are Jan 2010, and Nov/Dec 2010 are clear, but overall, accidents appear to be fairly well distributed throughout the year with no obvious pattern.

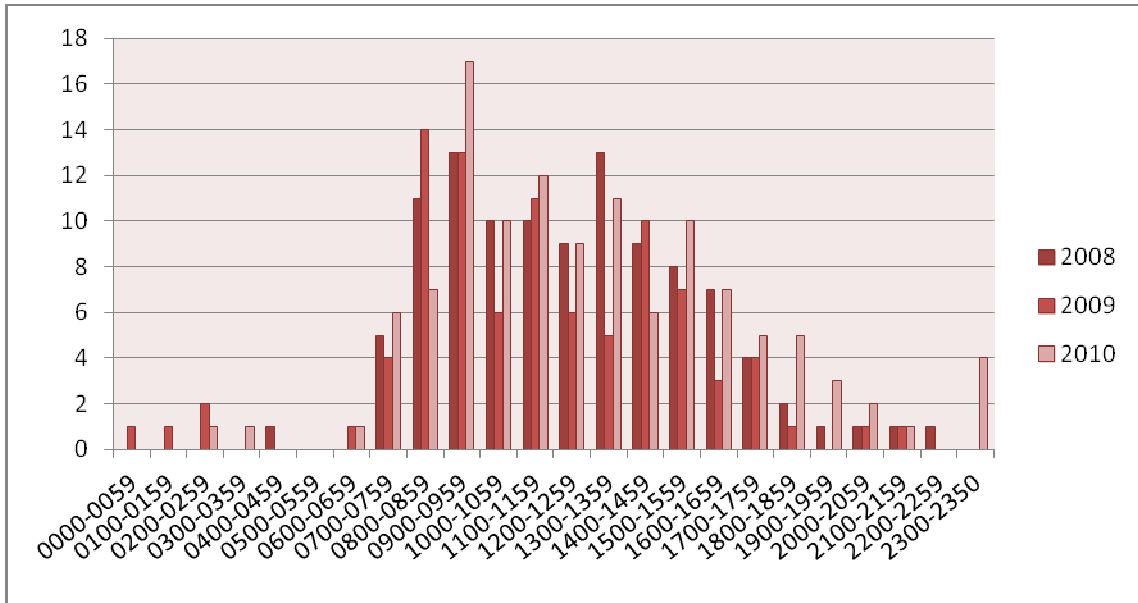
**Chart D : All reported slips, trips and falls 2008-2010, by month**



- There is a tendency for more slips and trips to occur between 0900-0959 in all 3 years, although this is probably the time when most people are moving about. A

The rate of accidents based on footfall (or perhaps numbers of people walking about) may not show such a tendency.

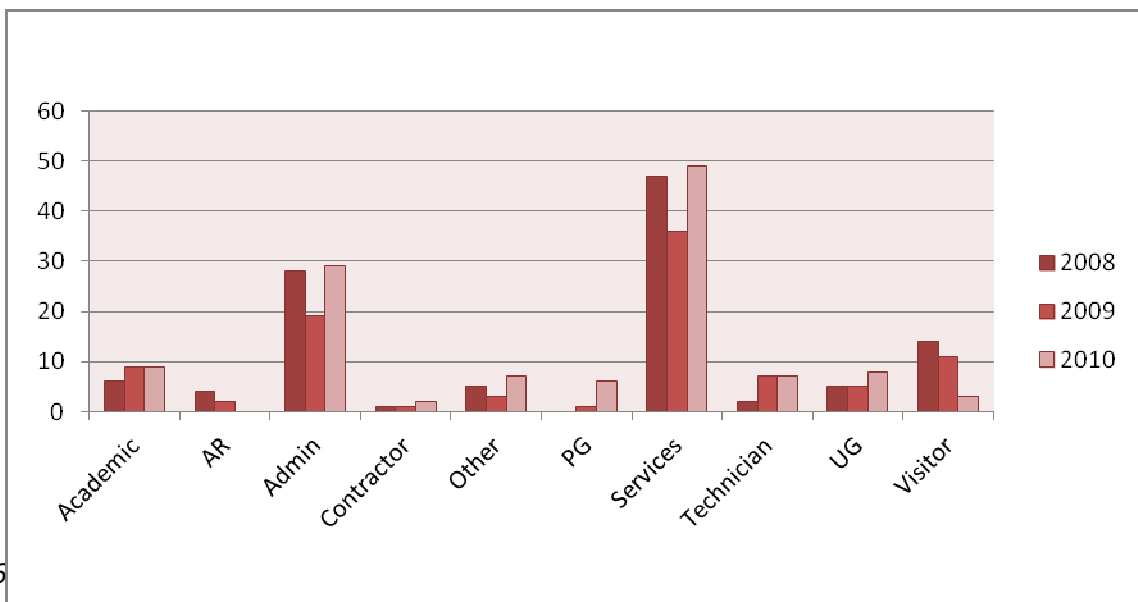
**Chart E : All reported slips, trips and falls 2008-2010, by time of day**



### Who they happen to

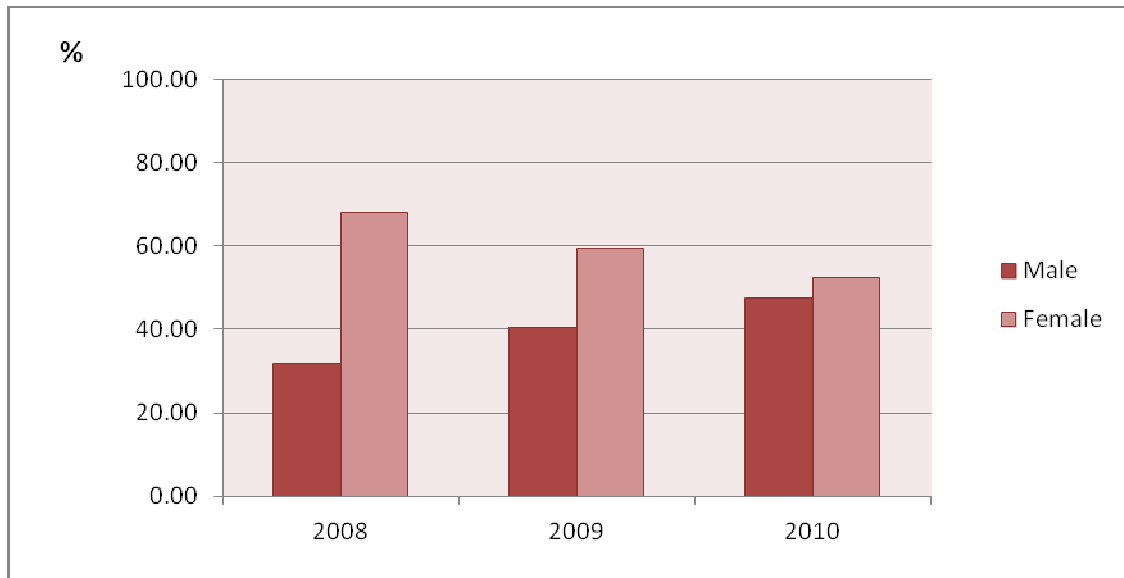
10. Chart F represents those who report their accidents, and it is likely that other groups do not report rather than do not have slip/trip accidents. The services peak is perhaps explained by the wide range of tasks carried out this group around campus through the working day; the admin staff peak is more difficult to interpret.

**Chart F: All reported slips, trips and falls 2008-2010, by employee group**



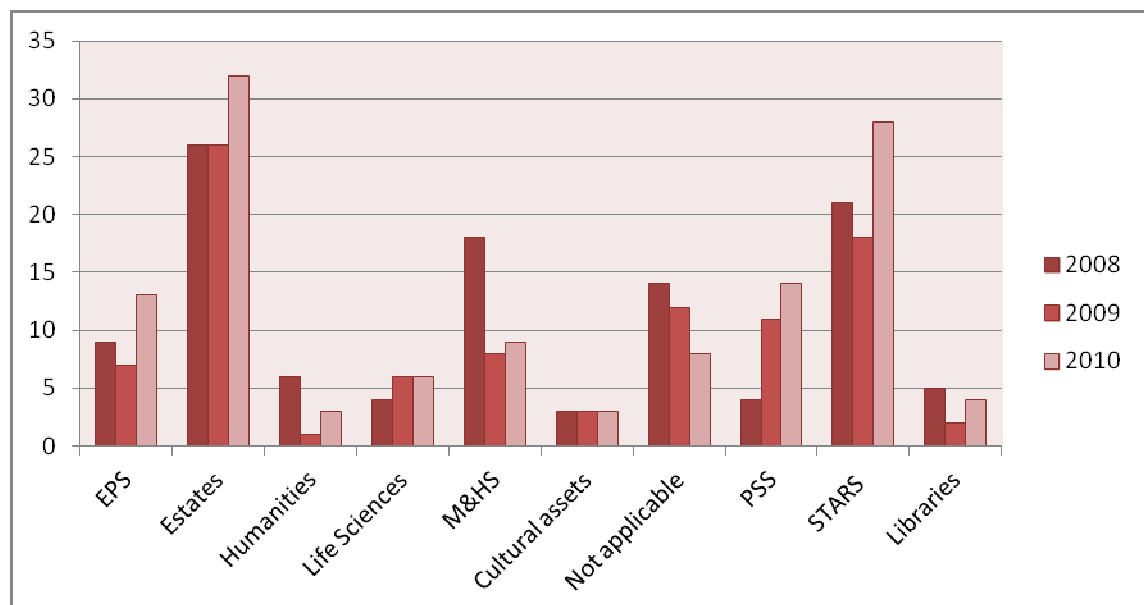
11. Chart G shows an increasing number of accidents to men over the 3 years (possibly due to better reporting from this group), so that reports from men and women are very similar in number in 2010.

**Chart G: All reported slips, trips and falls 2008-2010, by sex**

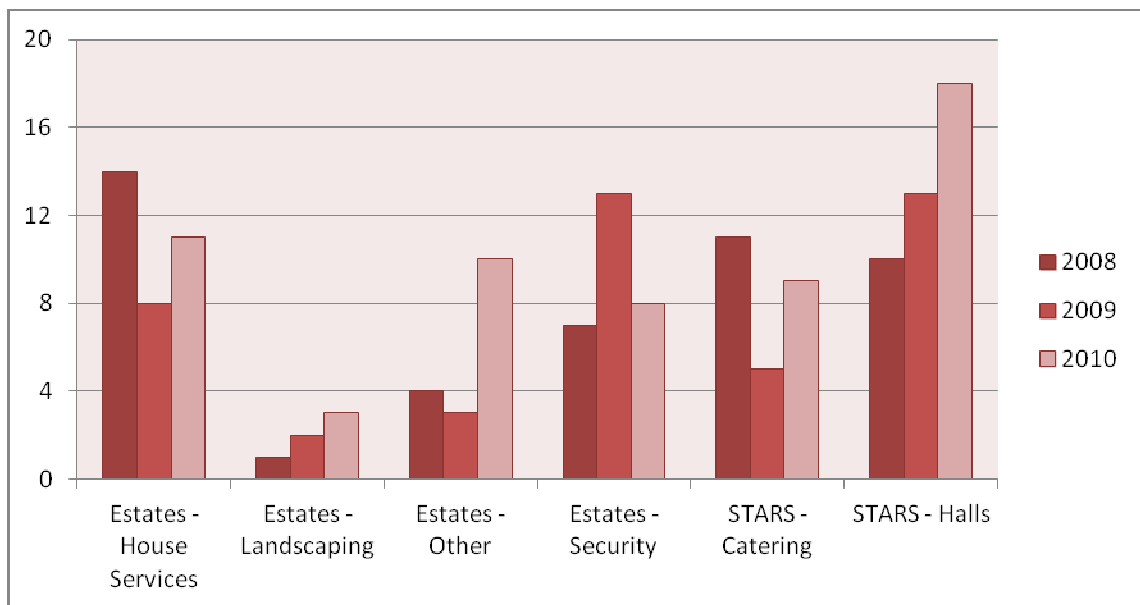


12. The next two charts show accidents by faculty, and a breakdown within Estates and STARS/ Student Experience.

**Chart H : All reported slips, trips and falls 2008-2010, by faculty**



**Chart I : All reported slips, trips and falls 2008-2010, in Estates & STARS**

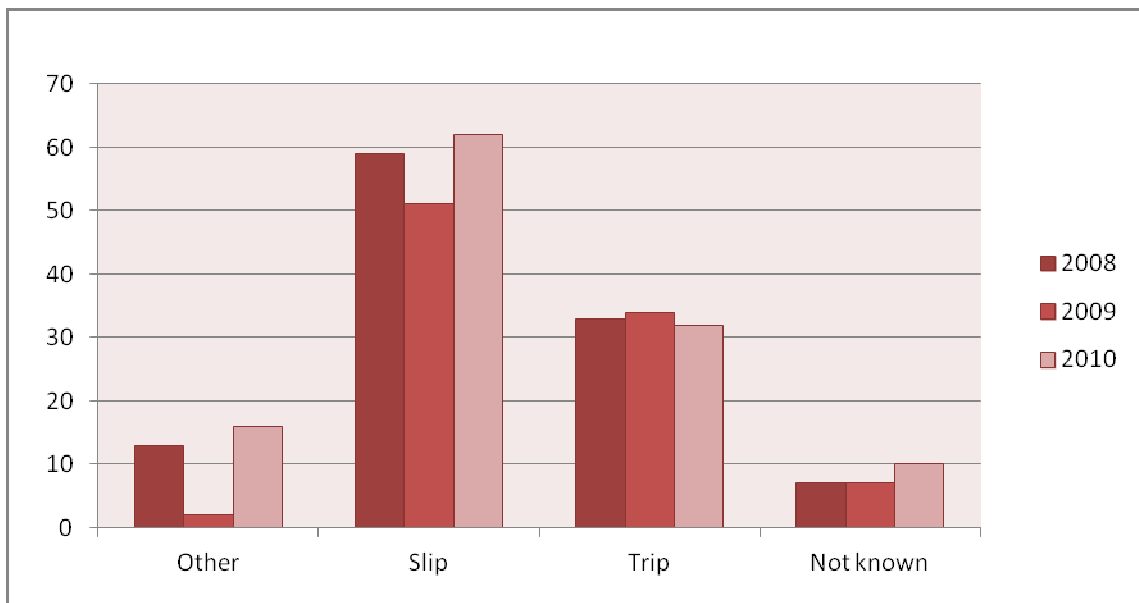


This suggests that targeting some groups within Estates and STAR/Student Experience may be productive.

### Slip or Trip?

- Slips and trips occur in the approx ratio of 2:1. The "other" category includes falls where for example, a chair has collapsed or moved.

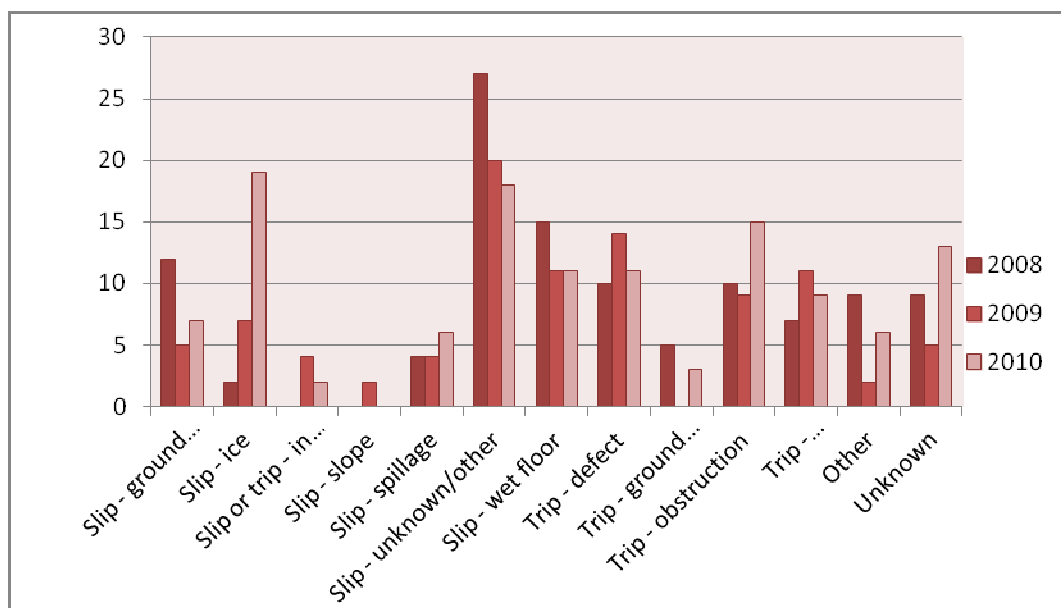
**Chart J: All accidents - Slip or trip?**



## Immediate contributory causes

14. The icy conditions in 2010 stand out, but apart from this, one of the key features of this chart is that in many cases, the immediate causes are not specified on the accident report form or on any associated documents or photographs. Slips indoors on wet floors and trips over defects or obstructions account for steady numbers of reports.

**Chart K : all slips and trips by main cause mentioned in accident report**



## Slips and trips outside – where on campus?

15. The following two images are plots of slips and trips outside (yellow dots are 2008, green are 2009 and orange are 2010 reports). These show a broad scatter of locations around the main campus on at Fallowfield (with other dots indicating other locations off these maps).
16. There are perhaps 3 areas on the main campus map where there are clusters – Burlington St, back of Stopford Building and outside Sackville St Building on Granby Row.

**Image 1 : sites of external slips and trips, main campus**



**Image 2 : sites of external slips and trips, Fallowfield residential campus**



## Slips and trips in indoor circulation spaces – which buildings?

17. The following table shows that there are no obvious geographical “hot spots”. Slips in building circulation areas does not appear to have any relationship with floor design, flooring material, cleaning regime, cleaning practices (eg time of day of cleaning), etc. The single largest cause of slips in buildings is wet floors. These are associated with wet cleaning (accounting for approx 5-6 accidents in circulation spaces per annum) and carry over of rain and snow near building entrances. Spillages account for 1-2 accidents per annum.

	2008	2009	2010
AMPPS / Alan Turing Building	1	0	0
AV Hill	0	1	0
Arthur Lewis Building	1	0	1
Chancellors	1	0	0
Core Technology Building	2	0	0
Crawford House	0	1	2
Dryden St Nursery	0	0	1
Eddie Newcombe Student Services Centre	0	1	0
Ellen Wilkinson Building	1	0	0
George Kenyon Hall	0	1	0
Humanities Bridgeford St	1	2	0
Humanities Devas St / Ellen Wilkinson Building	0	1	1
Jodrell Bank	1	0	0
John Rylands University Library	0	1	0
Kilburn	0	1	0
Manchester Business School East	1	0	0
Manchester Museum	1	1	3
Mansfield Cooper Building	1	0	0
McDougall Centre	0	1	0
Michael Smith	0	1	0
Oak House	0	0	1
Owens Park	1	1	1
Refectory (south campus)	1	1	0
Renold Building	1	0	0
Robert Darbyshire Practice	1	0	0
Sackville St Building	1	2	0
Schuster	0	1	0
Stephen Joseph	0	1	0
St Mary's Hospital	1	0	0
Stopford Building	3	3	2
The Mill	0	0	2
University Place	5	1	3
Waterloo Place	1	0	0
Williamson	1	0	0